

# PACER

## SERIES 'S' SELF-PRIMING CENTRIFUGAL PUMPS

**HORIZONTAL . . . LONG or CLOSE COUPLED**  
*for industrial, agricultural and marine use*

**CLOSE-COUPLED  
ELECTRIC**



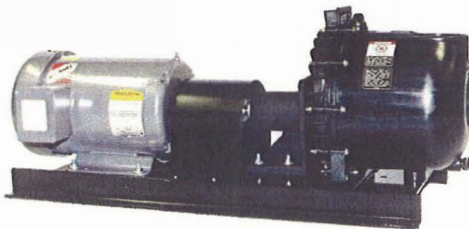
**GASOLINE ENGINE**

**PEDESTAL MOUNTED  
for flexible coupling**



**HYDRAULIC**

**PNEUMATIC**



**LONG COUPLED**

- **CHOICE OF MATERIALS -**  
Glass reinforced — polyester, polypropylene or Ryton® EPDM, Buna-N or Viton® elastomers, and stainless steel or non-metallic fasteners for resistance from chemical attack  
(See Chemical Resistance Chart)
- **FLOW RATES (electric driven)**  
To 280 U.S. GPM or 120 ft. TDH @ 60 Hz  
(To 883 LPM or 25.4m TDH @ 50 Hz)
- **FLOW RATES (Engine driven)**  
To 290 U.S. GPM or 126 ft. TDH  
(To 1060 LPM or 38.4m TDH)
- Suction lift to 25 ft. (7.6m) VERTICAL\*
- 1-1/2", 2" or 3" NPT ports. All polyester and 2" polypropylene also available with BSP threads.
- ELECTRIC MOTOR, GASOLINE ENGINE, DIESEL ENGINE, HYDRAULIC or PNEUMATIC DRIVEN
- CLOSE-COUPLED, LONG-COUPLED or PEDESTAL MOUNTED
- BUILT-IN CHECK VALVE FOR QUICK PRIMING

\* Based on water-like liquids at 70°F and at 3450 RPM after initial priming of pump housing.



AQUACULTURE



AGRICULTURE



MARINE



IRRIGATION AND  
SOLUTION TRANSFER



OIL FIELD



INDUSTRIAL AND  
WASTE TREATMENT

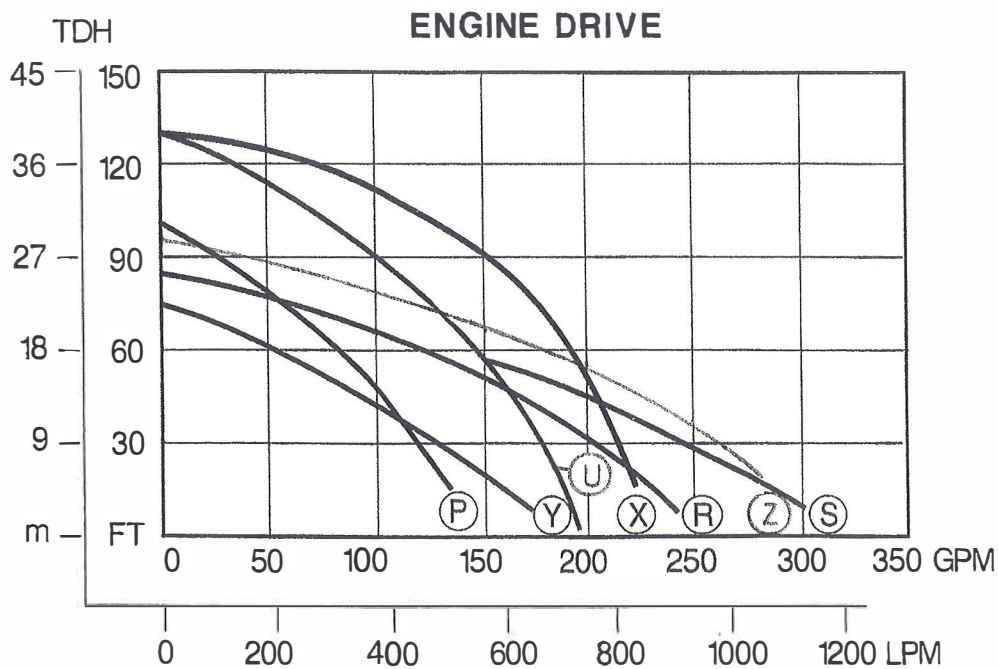
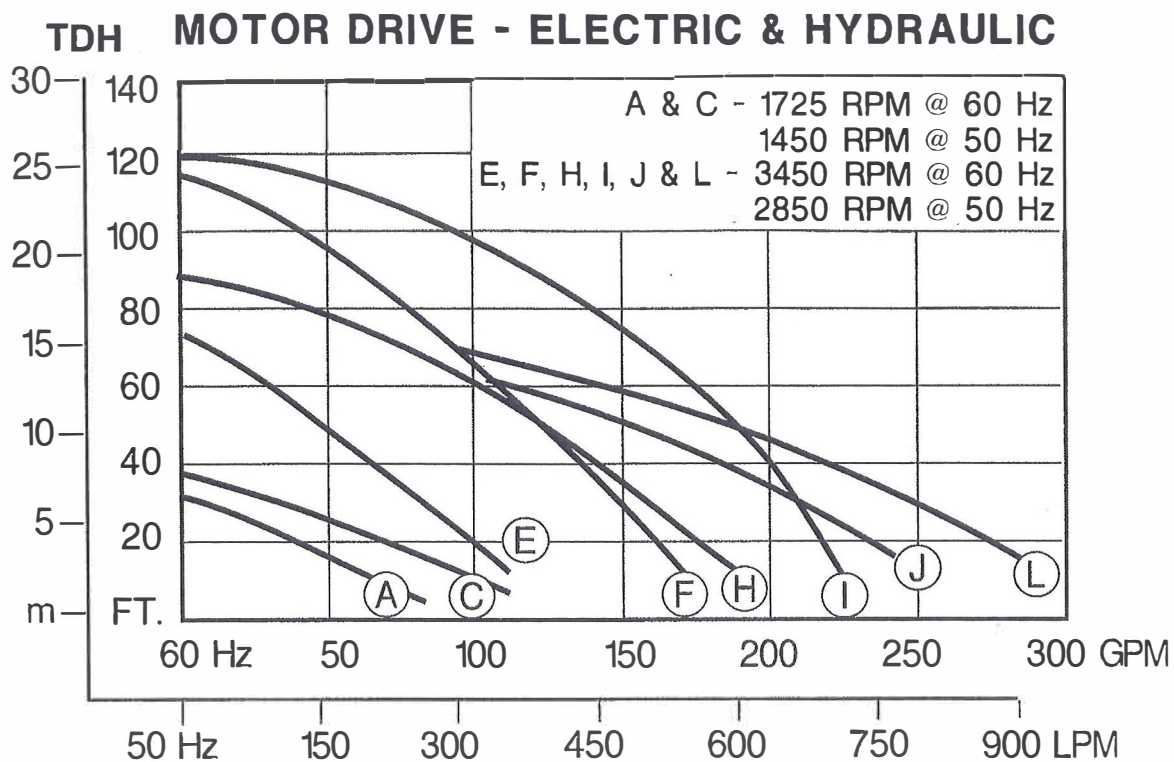


CHEMICAL  
APPLICATIONS



SPRAY RIG

## 'S' PUMP FLOW CURVES



| Curve    | Impeller | HP * |
|----------|----------|------|
| A 1 1/2" | 704      | .75  |
| C 1 1/2" | 706      | 1.5  |
| E 2"     | 667      | 2    |
| F 2"     | 704      | 3    |
| H 2"     | 974      | 3    |
| I 2"     | 706      | 5    |
| J 2"     | 975      | 5    |
| L 3"     | 975      | 5    |
| P 2"     | 704      | 3.5  |
| R 2"     | 975      | 5.5  |
| S 3"     | 975      | 5.5  |
| U 2"     | 706      | 5.5  |
| X 3"     | 8706     | 8    |
| Y 2"     | 974      | 4    |
| Z 3"     | 8975     | 8    |

\* HP Based on specific gravity of 1.0

# POLYESTER PUMPS



CLOSE-COUPLED  
ELECTRIC

## PUMP CLOSE-COUPLED TO ELECTRIC MOTOR

| FLOW<br>CURVE<br>LETTER | PORT<br>SIZE<br>IN. | MAXIMUM<br>FLOW RATE |                   | MAX.<br>TDH       |                 | HP REQ'D      |                      | MODEL<br>NUMBER | PRICE<br>CODE<br>NUMBER | ELECTRIC MOTOR 60 Hz<br>ADD TO MODEL &<br>PRICE CODE NO. . . . |                       |
|-------------------------|---------------------|----------------------|-------------------|-------------------|-----------------|---------------|----------------------|-----------------|-------------------------|--|-----------------------|
|                         |                     | GPM<br>@<br>60 Hz    | LPM<br>@<br>50 Hz | FT.<br>@<br>60 Hz | m<br>@<br>50 Hz | 60 Hz<br>/RPM | 50 Hz<br>2850<br>RPM |                 |                         | 115/230V<br>1/60 TEFC  | 230/460V<br>3/60 TEFC |
|                         |                     | A                    | 1½                | 80                | 252             | 30            | 6.4                  |                 |                         | .5/1750  | .25/1450              |
| C                       | 1½                  | 120                  | 378               | 32                | 6.8             | 1.0/1750      | .5/1450              | SE1½CL-         | 58-11C4-                | G1.0C  | H1.0C                 |
| E                       | 2                   | 110                  | 346               | 70                | 14.8            | 2/3450        | 1.1                  | SE2EL-          | 58-12E4-                | C2.0C  | D2.0C                 |
| H                       | 2                   | 180                  | 567               | 85                | 18              | 3/3450        | 1.7                  | SE2HL-          | 58-12H4-                | C3.0C  | D3.0C                 |
| •F                      | 2                   | 160                  | 504               | 115               | 24.3            | 3/3450        | 2.2                  | SE2FL-          | 58-12F4-                | C3.0C *  | D3.0C                 |
| J                       | 2                   | 240                  | 756               | 75                | 15.9            | 5/3450        | 3                    | SE2JL-          | 58-12J4-                | C5.0C *  | D5.0C                 |
| •I                      | 2                   | 230                  | 725               | 120               | 25.4            | 5/3450        | 4                    | SE2IL-          | 58-12I4-                | C5.0C *  | D5.0C                 |
| L                       | 3                   | 280                  | 883               | 75                | 15.9            | 5/3450        | 4.2                  | SE3LL-          | 58-13L4-                | C5.0C *  | D5.0C                 |

Pump molded of glass reinforced polyester with 316 stainless steel internal fasteners, 304 SS external fasteners, EPDM "O"-rings and gasket, check valve. (Viton® available) Polypropylene baseplate, close-coupled electric motor. Also available in polypropylene & Ryton. \* 230 Volt only.

HP requirements based on specific gravity of 1.0.

• 'F' and 'I' curves limited to 1.0 SG (water). Exceeding 1.0 SG requires next highest horsepower.

## PUMP CLOSE-COUPLED TO 12 & 24 VOLT DC MOTORS

| FLOW<br>CURVE<br>LETTER | PORT<br>SIZE<br>IN. | MAXIMUM<br>FLOW RATE |                   | MAX.<br>TDH       |                 | HP  | MODEL<br>NUMBER | PRICE<br>CODE<br>NUMBER | DC MOTOR<br>ADD TO MODEL &<br>PRICE CODE NO. . . . |           |
|-------------------------|---------------------|----------------------|-------------------|-------------------|-----------------|-----|-----------------|-------------------------|--|-----------|
|                         |                     | GPM<br>@<br>60 Hz    | LPM<br>@<br>50 Hz | FT.<br>@<br>60 Hz | m<br>@<br>50 Hz |     |                 |                         | 12V  | 24V       |
|                         |                     | A                    | 2                 | 80                | 252             |     |                 |                         | 30   | 6.4       |
| A                       | 2                   | 80                   | 252               | 30                | 6.4             | .5  | SE2AB-          | 58-12A2-                |  | DC.5C-24  |
| C                       | 2                   | 120                  | 378               | 32                | 6.8             | 1.0 | SE2CB-          | 58-12C2-                | DC1.0C-12  |           |
| C                       | 2                   | 120                  | 378               | 32                | 6.8             | 1.0 | SE2CB-          | 58-12C2-                |  | DC1.0C-24 |

Pumps close-coupled to DC motors are fitted with Buna-N elastomers only. These pumps are suitable for fresh or saltwater applications. All specifications are based on a specific gravity of 1.0.

## PUMP with GASOLINE ENGINE DRIVE

\* See page 6 for engines available with electric start option



GASOLINE ENGINE  
DRIVE

| FLOW<br>CURVE<br>LETTER | PORT<br>SIZE<br>IN. | MAX.<br>FLOW<br>RATE |      | MAX.<br>TDH |     | SHIPPING<br>WEIGHT |     | MODEL<br>NUMBER | PRICE<br>CODE NO. | GASOLINE ENGINE<br>ADD TO MODEL &<br>PRICE CODE NO. . . . |                          |
|-------------------------|---------------------|----------------------|------|-------------|-----|--------------------|-----|-----------------|-------------------|---|--------------------------|
|                         |                     | GPM                  | LPM  | FT.         | m   | LBS.               | kg. |                 |                   | STANDARD  | HEAVY DUTY               |
|                         |                     | Y                    | 2    | 170         | 643 | 76                 | 23  |                 |                   | 40  | 19                       |
| P                       | 2                   | 150                  | 568  | 100         | 30  | 40                 | 19  | SE2PL-          | 58-12P4-          | -E4CP   |                          |
| R                       | 2                   | 230                  | 871  | 83          | 25  | 46                 | 23  | SE2RL-          | 58-12R4-          |   |                          |
| U                       | 2                   | 200                  | 757  | 130         | 40  | 46                 | 23  | SE2UL-          | 58-12U4-          | E5IC B&S<br>E5HOC Honda                                   | E6VCP B&S<br>E5HCP Honda |
| S                       | 3                   | 280                  | 1060 | 83          | 25  | 50                 | 24  | SE3SL-          | 58-13S4-          |   | same as above            |
| X                       | 3                   | 230                  | 871  | 126         | 38  | 70                 | 32  | SE3XL-          | 58-13X4-          | N/A   |                          |
| Z                       | 3                   | 290                  | 1102 | 90          | 27  | 70                 | 32  | SE3ZL-          | 58-13Z4-          | N/A   | E8VCP                    |

Molded of glass reinforced polyester with carrying handle, 316 stainless steel internal and external fasteners. EPDM O-rings and gasket, check valve. (Viton® available) See motor table on page 6 for diesel engine drive. 'S' pumps are also available with 305cc LCT Diesel engine.



HYDRAULIC



PNEUMATIC

### PUMP with HYDRAULIC or PNEUMATIC DRIVE

| FLOW CURVE LETTER | PORT SIZE | HYDRAULIC @ 3450 RPM |         |          |       |         | PNEUMATIC @ 2900 RPM |       |          |    |         | SHIP. WT LBS. |    | MODEL NUMBER | PRICE CODE NUMBER | ADD TO MODEL & PRICE CODE NO. |      |
|-------------------|-----------|----------------------|---------|----------|-------|---------|----------------------|-------|----------|----|---------|---------------|----|--------------|-------------------|-------------------------------|------|
|                   |           | FLOW RATE            |         | MAX. TDH |       | REQ. HP | FLOW RATE            |       | MAX. TDH |    | REQ. HP | HY            | PN |              |                   | HYD.                          | PNEU |
|                   |           | IN.                  | GPM LPM | FT. m    | FT. m |         | GPM LPM              | FT. m |          |    |         |               |    |              |                   |                               |      |
| E                 | 2         | 110                  | 416     | 71       | 22    | 2.0     | 90                   | 340   | 49       | 15 | 1.0     | 18            | 44 | SE2EL-       | 58-12E4-          |                               |      |
| F                 | 2         | 160                  | 605     | 115      | 35    | 5.0     | 133                  | 503   | 80       | 24 | 2.0     | 18            | 44 | SE2FL-       | 58-12F4-          |                               |      |
| •I                | 2         | 230                  | 870     | 120      | 37    | 5.0     | 190                  | 719   | 83       | 25 | 3.0     | 18            | 44 | SE2IL-       | 58-12I4-          | -HYC                          | -PNC |
| J                 | 2         | 240                  | 908     | 75       | 23    | 5.0     | 200                  | 757   | 52       | 16 | 3.0     | 18            | 44 | SE2JL-       | 58-12J4-          |                               |      |
| L                 | 3         | 280                  | 1060    | 75       | 23    | 5.0     | 242                  | 915   | 52       | 16 | 3.0     | 21            | 47 | SE3LL-       | 58-13L4-          |                               |      |

Pump molded of glass reinforced polyester with 316 stainless steel internal fasteners, 304 SS external fasteners, EPDM "O"-rings, gasket and check valve. (Viton® available) Pneumatic driven includes a steel baseplate. Motor shaft is a 316 stainless steel stubshaft. Also available in polypropylene & Ryton. • 'I' curve is limited to 1.0 SG (water). Exceeding 1.0 SG requires next highest HP.

## CLOSE COUPLED ELECTRIC POLYPROPYLENE PUMPS

### POLYPROPYLENE / VITON®

| FLOW CURVE LETTER | PORT SIZE | MAXIMUM FLOW RATE |       | MAX. TDH    |       | HP REQUIRED |            | MODEL NUMBER | PRICE CODE NUMBER | ELECTRIC MOTOR 60 Hz |                                     |                    |
|-------------------|-----------|-------------------|-------|-------------|-------|-------------|------------|--------------|-------------------|----------------------|-------------------------------------|--------------------|
|                   |           | IN.               | GPM @ | 60 Hz LPM @ | FT. @ | m @         | 60 Hz /RPM |              |                   | 50 Hz /2850 RPM      | ADD TO MODEL & PRICE CODE NO. . . . |                    |
|                   |           |                   |       |             |       |             |            |              |                   |                      | 60 Hz                               | 230/460V/3/60 TEFC |
| A                 | 1½        | 80                | 252   | 30          | 6.4   | .5/1750     | .25/1450   | SPRY1½AV-    | 58-21A1-          | G.5C                 | H.5C                                |                    |
| C                 | 1½        | 120               | 378   | 32          | 6.8   | 1.5/1750    | .5/1450    | SPRY1½CV-    | 58-22C1-          | G1.OC                | H1.OC                               |                    |
| E                 | 2         | 110               | 346   | 70          | 14.8  | 2/3450      | 1.1        | SPRY2EV-     | 58-22E1-          | C2.OC                | D2.OC                               |                    |
| H                 | 2         | 180               | 567   | 85          | 18    | 3/3450      | 1.7        | SPRY2HV-     | 58-22H1-          | C3.OC                | D3.OC                               |                    |
| •F                | 2         | 160               | 504   | 115         | 24.3  | 3/3450      | 2.2        | SPRY2FV-     | 58-22F1-          | C3.OC                | D3.OC                               |                    |
| J                 | 2         | 240               | 756   | 75          | 15.9  | 5/3450      | 3          | SPRY2JV-     | 58-22J1-          | C5.OC                | D5.OC                               |                    |
| L                 | 3         | 280               | 883   | 75          | 15.9  | 5/3450      | 4.2        | SPRY3LV-     | 58-23L1-          | C5.OC                | D5.OC                               |                    |

Pump molded of glass-filled polypropylene with glass-filled Ryton® volute, 304 SS external fasteners, Viton® "O"-rings, gasket, check valve, (EPDM available) polypropylene baseplate, close coupled electric motor. • 'F' curve is limited to 1.0 SG (water). Exceeding 1.0 SG requires next highest horsepower.

## RYTON PUMPS

### RYTON / VITON

| FLOW CURVE LETTER | PORT SIZE | MAXIMUM FLOW RATE |       | MAX. TDH    |       | HP REQUIRED |            | MODEL NUMBER | PRICE CODE NUMBER | ELECTRIC MOTOR 60 Hz |                                     |                    |
|-------------------|-----------|-------------------|-------|-------------|-------|-------------|------------|--------------|-------------------|----------------------|-------------------------------------|--------------------|
|                   |           | IN.               | GPM @ | 60 Hz LPM @ | FT. @ | m @         | 60 Hz /RPM |              |                   | 50 Hz /2850 RPM      | ADD TO MODEL & PRICE CODE NO. . . . |                    |
|                   |           |                   |       |             |       |             |            |              |                   |                      | 60 Hz                               | 230/460V/3/60 TEFC |
| A                 | 1½        | 80                | 252   | 30          | 6.4   | .5/1750     | .25/1450   | SY1½AV-      | 58-31A1-          | G.5C                 | H.5C                                |                    |
| C                 | 1½        | 120               | 378   | 32          | 6.8   | 1.5/1750    | .5/1450    | SY1½CV-      | 58-32C1-          | G1.OC                | H1.OC                               |                    |
| E                 | 2         | 110               | 346   | 70          | 14.8  | 2/3450      | 1.1        | SY2EV-       | 58-32E1-          | C2.OC                | D2.OC                               |                    |
| H                 | 2         | 180               | 567   | 85          | 18    | 3/3450      | 1.7        | SY2HV-       | 58-32H1-          | C3.OC                | D3.OC                               |                    |
| •F                | 2         | 160               | 504   | 115         | 24.3  | 3/3450      | 2.2        | SY2FV-       | 58-32F1-          | C3.OC                | D3.OC                               |                    |
| J                 | 2         | 240               | 756   | 75          | 15.9  | 5/3450      | 3          | SY2JV-       | 58-32J1-          | C5.OC                | D5.OC                               |                    |
| L                 | 3         | 280               | 883   | 75          | 15.9  | 5/3450      | 4.2        | SY3LV-       | 58-33L1-          | C5.OC                | D5.OC                               |                    |

Pump molded of glass-filled Ryton® with 304 SS external fasteners, Viton® "O"-rings and Ryton gasket, check valve, (EPDM available) polypropylene baseplate, close coupled electric motor. • 'F' curve is limited to 1.0 SG (water). Exceeding 1.0 SG requires next highest horsepower.

## 'S' PUMP CONSTRUCTION GUIDE (Build a pump for your application)

### I. Close coupled pump

- A. Select flow curve
- B. Determine HP required.
- C. Determine materials of construction (consult chemical resistance guide)
- D. Construct pump model and price code numbers using pump table below
- E. Add drive model and price code number suffix from motor table
- F. Order as 1 item.

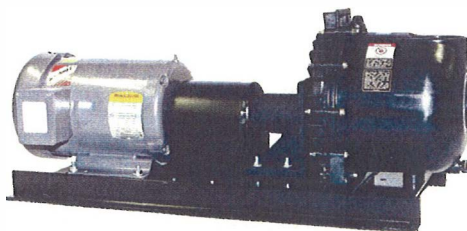


(Ordering example: close coupled pump)

| ITEM | QUANTITY | DESCRIPTION/ MODEL   | MODEL NUMBER |
|------|----------|--|--------------|
| 1    | 1        | 'S' pump, polyester, 2" ports, 'E' impeller, EPDM elastomers. 2.0 HP, 3450 RPM, 230/460/3/60 TEFC motor. | SE2EL D2.0C  |

### II. Long coupled pumps

Pacer 'S' series pumps are also available in a long coupled configuration. The complete unit consists of the pump mounted to a bearing pedestal, flexible coupling and coupling guard and electric motor or gasoline engine, assembled and mounted on an epoxy coated steel base plate.



CONSULT FACTORY FOR  
CONFIGURATION AND  
PRICING ASSISTANCE

### PUMP TABLE

| PUMP MATERIAL                |       |      | PORT SIZE (NPT) |     | IMPELLER   | ELASTOMERS, SEAL, INTERNAL FASTENERS                              |   |     |    |
|------------------------------|-------|------|-----------------|-----|--|---|---|-----|----|
| Series 'S'                   | Model | PCN  | Model           | PCN | Model & PCN  | Description: Internals  | Model   | PCN |    |
| Polyester                    | SE    | 58-1 | 1½              | 1   | A, C<br>E, F, H, I, J, P, R, U, Y<br>L, N, S, X, Z | Viton® - carbon/ceramic<br>316SS fasteners, (unlined<br>volute)   | V   | 1   |    |
| Polypro.                     | SPRY  | 58-2 | 2               | 2   |  | Buna - carbon/ceramic<br>316SS fasteners, (unlined<br>volute)     | B   | 2   |    |
| Ryton®                       | SY    | 58-3 | 3               | 3   |  | Buna - carbon/ceramic,<br>316SS fasteners, (Buna<br>lined volute) | BL  | 3   |    |
| External fasteners are 304SS |       |      |                 |     |  |   | EPDM - carbon/ceramic<br>316SS fasteners, (unlined<br>volute)     | L   | 4  |
|                              |       |      |                 |     |  |   | EPDM - carbon/ceramic,<br>316SS fasteners, (EPDM<br>lined volute) | LL  | 5  |
|                              |       |      |                 |     |  |   | EPDM SiC Non-<br>metallic, (unlined volute)                       | LN  | 88 |
|                              |       |      |                 |     |  |   | Viton® - SiC non-metallic,<br>(unlined volute)                    | VN  | 99 |

+ MOTOR (see Motor Table on next page)

**NOTE:**

All 'S' pumps are glass reinforced.  
 Polypropylene pump includes Ryton® volute. (SPRY)  
 Volute lining is same as gasket material.  
 Polypropylene baseplate furnished with close-coupled models  
 and epoxy painted steel with 5 HP close coupled models.  
 For BSP threads, add B in 4th digit of Model No. and change  
 Price Code No. from 1 to 4, 2 to 5, 3 to 6. Note: Impeller  
 designation now becomes the 5th digit of model number  
 only for BSP pumps. (Available with polyester pumps, and  
 limited polypropylene pumps).

**MOTOR TABLE**

| Electric Motors Close Coupled                              |  | Electric Motor Key   |
|--|--|--|
| TEFC (60 Hz)   | TEFC (50 Hz)   | 60 Hz  |
| HP Model   | HP Model   | G = 1750 RPM 1φ<br>C = 3450 RPM 1φ<br>H = 1750 RPM 3φ<br>D = 3450 RPM 3φ |
| G.5C<br>G.75C<br>G1.0C<br>G1.5C<br>C2.0C<br>C3.0C<br>C5.0C | A.5C<br>A.75C<br>A1.0C<br>A1.5C<br>B2.0C                   | 50 Hz  |
| H.5C<br>H.75C<br>H1.0C<br>H1.5C<br>D2.0C<br>D3.0C          | E.5C<br>E.75C<br>E1.0C<br>E1.5C<br>F1.5C<br>F2.0C<br>F3.0C | A = 1450 RPM 1φ<br>B = 2850 RPM 1φ<br>E = 1450 RPM 3φ<br>F = 2850 RPM 3φ |
|  |  | 60 Hz 1φ 115/230<br>50 Hz 1φ 208-230/50<br>60 Hz 3φ 208/230/460          |

**Gasoline/Diesel Engines**

| DESCRIPTION                         | MODEL  | PRICE CODE |
|-------------------------------------|--------|------------|
| Briggs & Stratton series 550        | E4C    | 58-0634    |
| Briggs & Stratton series 900        | E5IC   | 58-0644    |
| Honda 5hp GC 160 OHC residential    | E5HOC  | 58-0635GC  |
| * Honda 5.5hp GX 160 OHV commercial | E5HCP  | 58-0635H   |
| * Briggs & Stratton 6.5hp Vanguard  | E6VCP  | 58-0646V   |
| Briggs & Stratton Vanguard 8 HP.    | E8VCP  | 58-0967    |
| * LCT 305 cc Diesel                 | E5DLCP | 58-0635L   |

\* AVAILABLE WITH ELECTRIC START OPTION

**Pneumatic Motor**

| HP | RPM  | Req'd PSI | Req'd SCFM | Model & PCN |
|----|------|-----------|------------|-------------|
| .5 | 1750 | 30        | 25         | PNC         |
| 1  | 1750 | 37        | 38         |             |
| 1  | 2900 | 27        | 45         |             |
| 2  | 2900 | 49        | 70         |             |
| 3  | 2900 | 74        | 100        |             |
| 4  | 2900 | 102       | 130        |             |

To approximate flow at 2900 RPM, reduce flow by 20%, head by 29% and HP by 40%

**Hydraulic Motor**

| HP | RPM  | Req'd PSI | Req'd GPM | Model & PCN |
|----|------|-----------|-----------|-------------|
| 2  | 3450 | 500       | 9         | - HYC       |
| 3  | 3450 | 750       | 9         |             |
| 5  | 3450 | 1200      | 9.2       |             |

## SERIES 'S' PEDESTAL MOUNTED PUMPS



'PE' - plastic pedestal  
with carbon steel shaft

### GENERAL INFORMATION AND POWER REQUIREMENTS



'CSS' - cast iron pedestal  
with stainless steel shaft

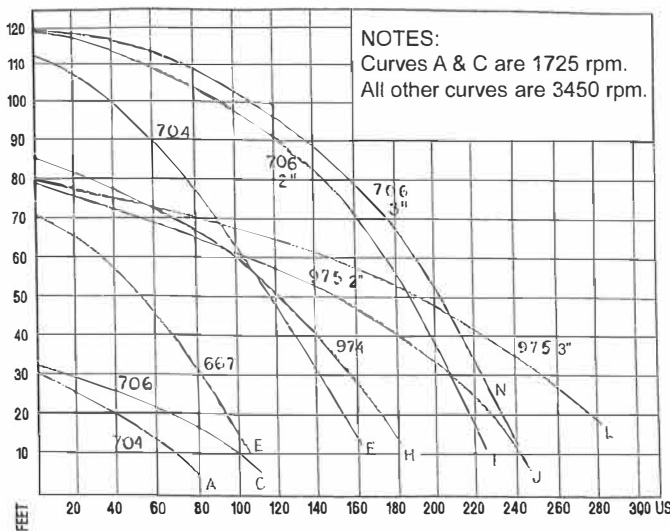
Pacer 'S' series pumps are manufactured in port sizes 1 1/2", 2" and 3" from engineered thermoplastics. These thermoplastics are Poloyester, Polypropylene and Ryton® for pumping water, saltwater, agricultural chemicals and many industrial chemicals.

The power source can be supplied from the factory in the form of electric motors or gasoline and diesel engines. The same power sources may also be supplied and installed by the customer.

All internal and external fasteners are stainless steel. Buna-N, EPDM or Viton® elastomers are available from stock. As pictured above, the Pacer Pedestal Pump is coupled to either a plastic pedestal with carbon steel shaft or a cast iron pedestal with stainless steel shaft.

Pacer pedestal mounted pumps are available with five different impellers, each having different flow characteristics. The chart at left below shows the flow curves for the five impellers operated by 1725 RPM or 3450 RPM, 60Hz electric motors. The curve letters A, C, E, etc. also become part of the model number shown on the chart at right below.

For example, the third model listed, SE2EL has the number 667 impeller and will perform to flow curve E (E is fourth character in model number). The horsepower required is 2.0 at 3450 RPM. Therefore, this pump can be operated efficiently by coupling to a 2 Hp or greater electric motor (3450 RPM) or it can be driven by a 2Hp or larger gasoline engine. The flow curves can be achieved by gas engines operating at typically 3600 RPM. The suction and discharge port size for the first model listed below right is 1 1/2" and the last is 3". The balance of models shown have 2" ports.



| PUMP MODEL | CAST IRON PEDESTAL | PLASTIC PEDESTAL | CURVE | IMPELLER | RPM  | REQUIRED HP |
|------------|--------------------|------------------|-------|----------|------|-------------|
| SE11/2AL   | CSS                | PE               | A     | 704      | 1725 | .5          |
| SE2CL      | CSS                | PE               | B     | 706      | 1725 | 1.0         |
| SE2EL      | CSS                | PE               | E     | 667      | 3450 | 2.0         |
| SE2FL      | CSS                | PE               | F     | 704      | 3450 | 3.0         |
| SE2HL      | CSS                | PE               | H     | 974      | 3450 | 3.0         |
| SE2IL      | CSS                | PE               | I     | 706      | 3450 | 5.0         |
| SE2JL      | CSS                | PE               | J     | 975      | 3450 | 5.0         |
| SE3LL      | CSS                | PE               | L     | 975      | 3450 | 5.0         |
| SE3NL      | CSS                | PE               | N     | 706      | 3450 | 5.0         |

- For a complete model number add pump model and desired pedestal.
- Example: SE2EL CSS
- Plastic pedestal (PE) not recommended for side loading

# PACER

Division of ASM Industries, Inc.

## IMPROVED 'S' SERIES

### Series S Self-Priming Centrifugal Pumps

Series "S" Self-Priming Centrifugal Pumps are lightweight, corrosion resistant pumps for general service on water, salt water, and many agricultural chemicals. They feature stainless steel internal fasteners, or non-metallic solution contact Viton, EPDM or Buna-N "O"-rings and gasket, with stainless steel external fasteners. The pumps are molded of tough, glass reinforced polyester, polypropylene or Ryton. Polyester models are available with or without lined volute for abrasion resistance.

All pumps include a built-in check valve, feature easy servicing, and during pumping, a self-cleaning double volute keeps pump free of settled solids.

Mechanical Shaft Seal: Self-lubricating ceramic and carbon faces (silicon carbide optional) with stainless steel case and spring. (Hastelloy C and non-metallics available.)

### Horizontal...Long or close-coupled

### For industrial, agricultural and marine use

- Choice of materials—  
Pump constructed of: Polyester polypropylene—or Ryton
- **Optional elastomers and stainless steel or non-metallic fasteners available for chemical applications.**  
(Refer to our chemical resistance chart)
- Flow rates (electric driven)  
To 280 U.S. GPM or 120 ft. TDH  
(To 883 LPM or 25.4 TDH)
- Flow rates (fuel driven)  
To 280 U.S. GPM or 126 ft. TDH  
(To 1060 LPM or 38.4m TDH)
- Suction lift to 25 ft. (7.6m) vertical
- 1½", 2" or 3" ports, NPT and BSP (polyester)
- Electric motor, gasoline engine, hydraulic or pneumatic driven
- Close-coupled, long-coupled or pedestal mounted
- Built-in check valve: Prevents backflow and siphoning and allows for faster priming



Reinforced port for added strength

Ribbed body design for enhanced durability

Extra large tough handle

Molded threaded inserts for ease of inspection

User-friendly slotted hex head fasteners

Double-sized weep hole

## PACER® PUMPS



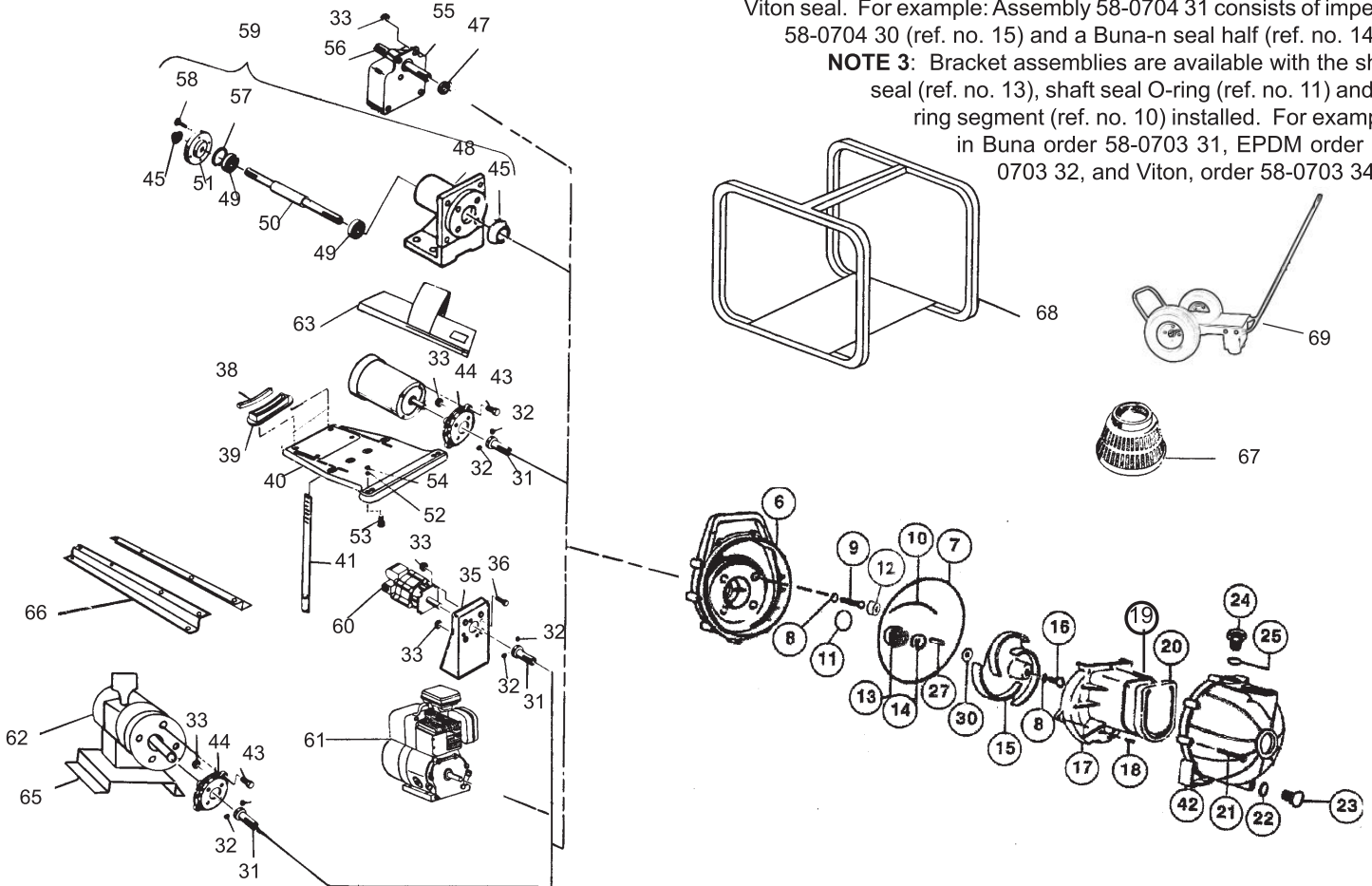
# SELF-PRIMING CENTRIFUGAL PUMP - "S" SERIES

PARTS LIST  
PP-9900-K  
March 2016

**NOTE 1:** You will note a multiple choice of impellers, volutes, and top volute screws. Once you have identified the impeller (from the pump model no., or by comparing your impeller to the descriptions given the various impellers) you can make your choice of impeller, volute, or volute screws by following the same letter grouping. For example: if your impeller is black, open type, 5 vane, .535" wide, then it is part no. 58-0706 30 and has an "A" designation, under the column marked "Group". You now choose the proper top volute screw (ref no. 19, as required).

**NOTE 2:** Impellers (ref. no. 15) may be ordered with the seal (ref. no. 14) installed. The part no. for these assemblies is the same as the impeller part no. except that the last digit is a "1" for Buna-N seal, a "2" for EPDM and a "3" for Viton seal. For example: Assembly 58-0704 31 consists of impeller 58-0704 30 (ref. no. 15) and a Buna-n seal half (ref. no. 14).

**NOTE 3:** Bracket assemblies are available with the shaft seal (ref. no. 13), shaft seal O-ring (ref. no. 11) and O-ring segment (ref. no. 10) installed. For example: in Buna order 58-0703 31, EPDM order 58-0703 32, and Viton, order 58-0703 34.



## PUMP PARTS LIST

| ITEM # | PART #      | PART DESCRIPTION   | QTY./PUMP | ITEM #   | PART #       | PART DESCRIPTION   | QTY./PUMP |
|--------|-------------|--|-----------|----------|--------------|--|-----------|
| 6      | 58-0703 30B | BRACKET, Polyester, Black  | 1         | 11       | 58-0976 71   | O-RING, Shaft Seal, BUNA-N                                       | 1         |
|        | 58-0703 40  | BRACKET, Polypropylene, grey   | 1         |          | 58-0976 72   | O-RING, Shaft Seal, EPDM   | 1         |
|        | 58-0703 60  | BRACKET, Ryton, brown  | 1         |          | 58-0976 73   | O-RING, Shaft Seal, VITON  | 1         |
| 7      | 58-0719 71  | O-RING, Body, BUNA-N   | 1         | 12       | 58-1750 90   | PLUG, Bracket Screw (non-metallic only)                          | 4         |
|        | 58-0719 72  | O-RING, Body, EPDM   | 1         | 11,13,14 | 58-0714 11   | SEAL, Shaft, BUNA-N, 316 S.S.,carbon/ceramic                     | 1         |
|        | 58-0719 73  | O-RING, Body, VITON  | 1         |          | 58-0714 12   | SEAL, Shaft, EPDM, 316 S.S.,carbon/ceramic                       | 1         |
| 8      | 58-0717 71  | O-RING, Screw, BUNA-N  | 5         |          | 58-0714 14   | SEAL, Shaft, VITON, 316 S.S.,carbon/ceramic                      | 1         |
|        | 58-0717 72  | O-RING, Screw, EPDM  | 5         |          | 58-0714 15   | SEAL, Shaft, Hastelloy C, Teflon, silicon carbide                | 1         |
|        | 58-0717 73  | O-RING, Screw, VITON   | 5         |          | 58-0714 92SG | SEAL, Shaft, Non-Metallic, ETFE, EPDM siliconized graphite       | 1         |
| 9      | 58-0715 10  | SCREW, Bracket, stainless steel for pumps close-coupled to engine and cast ped. mount, 5/16"-24 x 1.25"  | 4         |          | 58-0714 94SG | SEAL, Shaft, Non-Metallic, ETFE, VITON siliconized graphite      | 1         |
|        | 58-2167 10  | SCREW, Bracket, stainless steel for pumps pedestal mounted (plastic), close-coupled to electric, hydraulic or pneumatic motor, 5/16"-18 x 1.5" | 4         |          | 58-0891 92SG | SEAL, Shaft, Kynar, Polypro, Hastelloy C, EPDM, silicon carbide  | 1         |
| 10     | 58-0754 71  | O-RING, Segment, BUNA-N  | 1         |          | 58-0891 94SG | SEAL, Shaft, Kynar, Polypro, Hastelloy C, VITON, silicon carbide | 1         |
|        | 58-0754 72  | O-RING, Segment, EPDM  | 1         |          | 58-46250 11  | SEAL, Shaft, BUNA-N, 316 SS, silicon carbide                     | 1         |
|        | 58-0754 73  | O-RING, Segment, VITON   | 1         |          | 58-46250 12  | SEAL, Shaft, EPDM, 316 SS, silicon carbide                       | 1         |
|        |             |  |           |          | 58-46250 13  | SEAL, Shaft, VITON, 316 SS, silicon carbide                      | 1         |

"S" SERIES PUMP PARTS LIST

PP-9900-K

| ITEM # | PART #      | GROUP | PART DESCRIPTION   | QTY./PUMP   | ITEM # | PART #      | PART DESCRIPTION   | QTY./PUMP   |
|--------|-------------|-------|--|-------------|--------|-------------|--|-------------|
| 15     | 58-0704 30  | A     | IMPELLER, 3 Vane, .535" wide 5.5" dia., Polyester, black                       | 1           | 30     | 58-0778 11  | SHIM, .006", stainless steel   | as required |
|        | 58-0704 40  | A     | IMPELLER, 3 Vane, .535" wide 5.5" dia., Polypropylene, grey                    | 1           | 30     | 58-0778 12  | SHIM, .015", stainless steel   | as required |
|        | 58-0704 60  | A     | IMPELLER, 3 Vane, .535" wide 5.5" dia., Ryton, brown                           | 1           | 30     | 58-0778 13  | SHIM, .030", stainless steel   | as required |
|        | 58-0706 30  | A     | IMPELLER, 5 Vane, .535" wide 5.5" dia., Polyester, black                       | 1           |        | 58-1837 11  | SHIM, .006", S.S. (8hp only)   | as required |
|        | 58-0706 40  | A     | IMPELLER, 5 Vane, .535" wide 5.5" dia., Polypropylene, grey                    | 1           |        | 58-1837 12  | SHIM, .015", S.S. (8hp only)   | as required |
|        | 58-0706 60  | A     | IMPELLER, 5 Vane, .535" wide 5.5" dia., Ryton, brown                           | 1           |        | 58-1837 13  | SHIM, .030". S.S. (8hp only)   | as required |
|        | 58-0974 30  | B     | IMPELLER, 4 Vane, .600" wide 4.75" dia., Polyester, black                      | 1           | 31     | 58-1014 10  | ADAPTER, shaft, for close-coupled electric or pneumatic motor, stainless steel, .625" bore       | 1           |
|        | 58-0974 40  | B     | IMPELLER, 4 Vane, .600" wide 4.75" dia., Polypropylene, grey                   | 1           |        | 58-1165 10  | ADAPTER, S.S., for hydraulic motor, .563" bore   | 1           |
|        | 58-0974 60  | B     | IMPELLER, 4 Vane, .600" wide 4.75" dia., Ryton, brown                          | 1           | 32     | 58-0883     | SET SCREW, 1/4"-20 x .25" long, steel  | 2           |
|        | 58-0975 30  | C     | IMPELLER, 4 Vane, .975" wide, 4.75" dia., Polyester, black                     | 1           | 33     | 58-0745 10  | NUT, FLANGE 5/16"-18, stainless steel  | 4           |
|        | 58-0975 40  | C     | IMPELLER, 4 Vane, .975" wide, 4.75" dia., Polypropylene, grey                  | 1           | 35     | 58-1011 20  | PEDESTAL, hydraulic motor, molded plastic  | 1           |
|        | 58-0975 60  | C     | IMPELLER, 4 Vane, .975" wide, 4.75" dia., Ryton, brown                         | 1           | 36     | 58-0729 10  | SCREW, for mounting hydraulic motor to pedestal, 5/16"-18 x 1.0" long, plated steel              | 4           |
|        | 58-0667 30  | B     | IMPELLER, 3 Vane, .535" wide, 4.75" dia., Polyester, black                     | 1           | 38     | 58-1826 71  | PAD, Rubber, Saddle  | 1           |
|        | 58-0667 40  | B     | IMPELLER, 3 Vane, .535" wide, 4.75" dia., Polypropylene, grey                  | 1           | 39     | 58-1828 90  | SADDLE, Electric motor, 6-5/8" dia. motor  | 1           |
|        | 58-0667 60  | B     | IMPELLER, 3 Vane, .535" wide, 4.75" dia., Ryton, brown                         | 1           |        | 58-1825 90  | SADDLE, 5-11/16" diameter motor  | 1           |
|        | 58-8706 30  |       | IMPELLER, 5 Vane, .535" w. 5.5" d. black Polyester (8hp pumps only, 7/2003)    | 1           | 40     | 58-1823 40  | BASEPLATE, for close-coupled electric motors, molded plastic                                     | 1           |
|        | 58-8975 30  |       | IMPELLER, 4 vane, .975" w x 4.75" d, black Polyester, (8hp pumps only, 7/2003) | 1           | 41     | 58-0934 10  | STRAP, for close-coupled electric motors, SS   | 1           |
| 16     | 58-0716 10  |       | SCREW, Impeller, S.S., 5/16"-24x.75"   | 1           | 42     | 58-1001 30B | BODY, 1-1/2" NPT, Polyester, black   | 1           |
|        | 58-1668 10  |       | SCREW, Impeller, S.S., 3/8-24x1" (8hp only)                                    | 1           |        | 58-1001 40  | BODY, 1-1/2" NPT, Polypropylene, grey  | 1           |
|        | 58-1673 42  |       | SCREW, Impeller, Polypropylene, EPDM   | 1           |        | 58-1001 60  | BODY, 1-1/2" NPT, Ryton, brown   | 1           |
|        | 58-1673 43  |       | SCREW, Impeller, Ryton, Viton  | 1           |        | 58-1002 30B | BODY, 2" NPT, Polyester, black   | 1           |
|        | 58-1673 62  |       | SCREW, Impeller, Polypropylene, EPDM   | 1           |        | 58-1002 40  | BODY, 2" NPT, Polypropylene, grey  | 1           |
|        | 58-1673 63  |       | SCREW, Impeller, Ryton, Viton  | 1           |        | 58-1002 60  | BODY, 2" NPT, Ryton, brown   | 1           |
| 17     | 58-0702 30  | A     | VOLUTE, Flat, Polyester  | 1           |        | 58-0755 30B | BODY, 3" NPT, Polyester, black   | 1           |
|        | 58-0702 40  | A     | VOLUTE, Flat, Polypropylene  | 1           |        | 58-0755 40  | BODY, 3" NPT, Polypropylene, grey  | 1           |
|        | 58-0702 60  | A     | VOLUTE, Flat, Ryton, brown   | 1           |        | 58-0755 60  | BODY, 3" NPT, Ryton, brown   | 1           |
|        | 58-0773 31  | A     | VOLUTE, Buna-N lined Polyester   | 1           |        | 58-0943 30B | BODY, 1-1/2" BSP, Polyester, black   | 1           |
|        | 58-0773 32  | A     | VOLUTE, EPDM lined Polyester   | 1           |        | 58-0784 30B | BODY, 2" BSP, Polyester, black   | 1           |
|        | 58-0954 30  | B     | VOLUTE, Flat, Polyester  | 1           |        | 58-0784 40  | BODY, 2" BSP, Polypropylene, grey  | 1           |
|        | 58-0954 40  | B     | VOLUTE, Flat, Polypropylene  | 1           |        | 58-0877 30B | BODY, 3" BSP, Polyester, black   | 1           |
|        | 58-0954 60  | B     | VOLUTE, Flat, Ryton, brown   | 1           |        | 58-0877 40  | BODY, 3" BSP, Polypropylene, grey  | 1           |
|        | 58-0955 31  | B     | VOLUTE, Buna-N lined Polyester   | 1           | 43     | 58-1015 10  | SCREW, hex head cap, 3/8"-16x1.25" long, S.S.  | 4           |
|        | 58-0955 32  | B     | VOLUTE, EPDM lined Polyester   | 1           | 44     | 58-1010 20  | ADAPTER, Motor, for pump close-coupled to electric or pneumatic motor, molded plastic            | 1           |
|        | 58-0977 30  | C     | VOLUTE, Flat, Polyester  | 1           | 45     | 58-1955 71  | SEAL, lip, .710" ID, Buna-N  | 2           |
|        | 58-0977 40  | C     | VOLUTE, Flat, Polypropylene  | 1           |        | 58-1955 73  | SEAL, lip, .710" ID, VITON   | 2           |
|        | 58-0977 60  | C     | VOLUTE, Flat, Ryton, brown   | 1           | 47     | 58-0884 71  | SLINGER, Buna-N  | 1           |
|        | 58-0978 31  | C     | VOLUTE, Buna-N lined Polyester   | 1           | 48     | 58-1951 90  | HOUSING, Bearing, cast metal   | 1           |
|        | 58-0978 32  | C     | VOLUTE, EPDM lined Polyester   | 1           | 49     | 58-1954 90  | BEARING, Ball, .787" ID  | 2           |
| 18     | 58-0725 10  |       | SCREW, side volute, S.S., #6-cc x.5" long                                      | as required | 50     | 58-1952 10  | SHAFT, stainless steel, .75" diameter  | 1           |
| 19     | 58-0771 10  | A     | SCREW, top volute, S.S., #10-24x1.5"   | as required |        | 58-1952 91  | SHAFT, Hastelloy, .75" diameter  | 1           |
|        | 58-0997 10  | B,C   | SCREW, top volute, S.S., #10-24 x .5"  | as required | 51     | 58-1952 93  | SHAFT, Titanium, .75" diameter   | 1           |
| 20     | 58-0705 71  |       | CHECK VALVE, Buna-N  | 1           | 52     | 58-1953 10  | PLATE, End, stainless steel  | 1           |
|        | 58-0705 72  |       | CHECK VALVE, EPDM  | 1           | 53     | 58-0730 10  | FLAT WASHER, .563", stainless steel  | 2           |
|        | 58-0705 73  |       | CHECK VALVE, VITON   | 1           | 54     | 58-0729 10  | SCREW, 5/16"-18 x 1", stainless steel  | 2           |
| 21     | 58-1206 10  |       | SCREW, Body, SS, 1/4"-20 x 2-1/8" long   | 10          | 55     | 58-0745 10  | KEPNUT, 5/16"-18, stainless steel  | 2           |
| 22     | 58-1009 71  |       | O-RING, Drain Plug, Buna-N   | 1           | 56     | 58-0759 20  | BEARING Pedestal, molded plastic   | 1           |
|        | 58-1009 72  |       | O-RING, Drain Plug, EPDM   | 1           |        | 58-0777     | BEARING, Shaft Assy., standard, carbon steel   | 1           |
|        | 58-1009 73  |       | O-RING, Drain Plug, VITON  | 1           |        | 58-0777 10  | BEARING, Shaft Assy., with S.S. shaft sleeve   | 1           |
| 23     | 58-0723 30  |       | PLUG, Drain, Polyester, black  | 1           | 55,56  | 58-2053 01  | ASSEMBLY, Pedestal, 3/4" carbon steel shaft  | 1           |
|        | 58-0723 40  |       | PLUG, Drain, Polypropylene, grey   | 1           |        | 58-2053 02  | ASSEMBLY, Pedestal, with S.S. shaft sleeve   | 1           |
|        | 58-0723 60  |       | PLUG, Drain, Ryton, brown  | 1           | 57     | 58-1956 10  | SHIM, Bearing Shaft, cast metal pedestal, .006" thick  | as required |
| 24     | 58-0722 30B |       | PLUG, Filler, Polyester, black   | 1           | 58     | 58-2525 10  | SCREW, hex, 1/4"-20 x 3/4" stainless steel   | 4           |
|        | 58-0722 40  |       | PLUG, Filler, Polypropylene, grey  | 1           | 59     | 58-1950 01  | BEARING & PEDESTAL ASSY., with 3/4" S.S. shaft (includes items 45, 48, 49, 50, 51, 57 & 58)      | 1           |
|        | 58-0722 60  |       | PLUG, Filler, Ryton, brown   | 1           |        | 58-1950 01H | BEARING & PEDESTAL ASSY., with 3/4" Hastelloy shaft (includes items 45, 48, 49, 50, 51, 57 & 58) | 1           |
| 25     | 58-0765 71  |       | O-RING, Filler plug, Buna-N  | 1           | 60     | 58-0686     | MOTOR, Hydraulic, Parker   | 1           |
|        | 58-0765 72  |       | O-RING, Filler plug, EPDM  | 1           |        | 58-0686B    | MOTOR, Hydraulic, Cast Iron, Barnes  | 1           |
|        | 58-0765 73  |       | O-RING, Filler plug, VITON   | 1           | 61     | 58-0926     | GASOLINE ENGINE, CONSULT FACTORY   | 1           |
| 27     | 58-0718     |       | KEY, steel   | 1           | 62     | 58-0028     | MOTOR, pneumatic   | 1           |
|        | 58-0718 10  |       | KEY, stainless steel   | 1           | 63     | 58-0016     | BASEPLATE KIT, standard duty, call factory for details   | 1           |
|        | 58-0718 30  |       | KEY, Polyester   | 1           |        | 58-0016     | BASEPLATE KIT, heavy duty, call factory for details  | 1           |
|        |             |       |  |             | 65     | 58-0929     | BASE PLATE, for pumps coupled to pneumatic motor   | 1           |
|        |             |       |  |             | 66     | 58-0002     | BASE RUNNER KIT, two steel rails with fasteners  | 1           |
|        |             |       |  |             | 67     |             | SUCTION STRAINER, see Bulletin PA-206Q   | 1           |
|        |             |       |  |             | 68     | 58-0009     | ROLL CAGE, w/rubber feet, mounting hardware  | 1           |
|        |             |       |  |             | 69     | 58-0008     | WHEELED CART, for most engine driven pumps   | 1           |

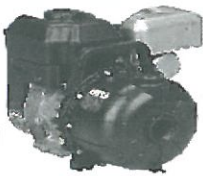
NOTE: All specifications, as shown, are subject to change without previous notice.

servicing  
industry  
worldwide

**PACER® PUMPS**

Div. ASM Industries, Inc.

(Printed in U.S.A.)



# ACCESSORIES & OPTIONS FOR 'S' SERIES PUMPS

PRICE LIST  
PF-1400M  
MARCH 2017

SEE MASTER PRICE LIST FOR LIST PRICES

**NOTE:** "Option" column checked if item is available built into or onto pump. "Kit" column checked if item available as unassembled kit. Both columns checked if item available either way.

| OPTION | KIT | PART NUMBER | DESCRIPTION   | 'S' PUMPS TO BE USED WITH/ON   |
|--------|-----|-------------|---|--|
| -      | X   | P-58-0002   | <b>BASE RUNNER KIT</b> - Includes two steel runners (rails) with fasteners. Order with 58-0114 Rubber Feet Kit  | up to 6.5 HP engine driven   |
| -      | X   | P-58-0003   | <b>RUBBER FEET KIT</b> - Includes 4 rubber feet with fasteners.   | up to 6.5 HP engine driven or close coupled to electric motor                            |
| --     | X   | P-58-0006 2 | <b>PUMP FITTINGS KIT</b> - strainer, elbow, 2 nipples, 4 rubber feet, male hose adaptors, roll teflon tape. (FOR 3" CHANGE LAST DIGIT FROM '2' TO '3')                          | All 2" or 3" 'S' pumps.  |
| -      | X   | P-58-0008   | <b>WHEELED CART</b>   | up to 6.5HP  |
| X      | X   | P-58-0009   | <b>ROLL CAGE KIT</b> - Welded one piece silver powder coated steel, rubber feet and mounting hardware   | up to 8 HP engine driven   |
| X      | X   | P-58-0010   | <b>HASTELLOY®C WETTED HARDWARE KIT</b> - Includes shaft seal & wetted fasteners.  | All pumps with 704 or 706 impeller except engine driven pumps                            |
| X      | X   | P-58-0013   | <b>HASTELLOY C SHAFT SEAL</b> with titanium wetted internal fasteners.  | All pumps with 704 or 706 impeller except pumps close coupled to engines                 |
| X      | X   | P-58-0059   | (Equivalent to part P-58-0013.)   | All pumps with 974 or 975 impeller except pumps close coupled to engines                 |
| X      | X   | P-58-0041   | (Equivalent to part P-58-0013.)   | All pumps close coupled to engines with 704 or 706 impeller                              |
| -      | X   | P-58-0001   | <b>PEDESTAL CONVERSION KIT</b> - Parts to convert to plastic pedestal mount with carbon steel shaft into pump.  | All pumps  |
| -      | X   | P-58-0012   | <b>STAINLESS STEEL PEDESTAL CONVERSION KIT</b> - Parts to convert to plastic pedestal mount with stainless steel shaft into pump.   | All pumps  |
| -      | X   | P-58-0014   | <b>BUNA-N KIT</b> - Buna-N fitted shaft seal, check valve, all 'O'-rings to rebuild pump.   | All pumps  |
| X      | X   | P-58-0015 S | <b>PROTEK ENGINE PROTECTION SYSTEM</b> - used to protect engine in the event of a seal failure. Actually separates pump from engine.  | 'S' pumps close coupled to engine with ¾" diameter shaft.                                |
| -      | X   | P-58-0005   | <b>EPDM KIT</b> - Same as P-58-0014, except EPDM.   | All pumps  |
| -      | X   | P-58-0017   | <b>VITON® KIT</b> - Same as P-58-0014, except Viton.  | All pumps  |
| X      | X   | P-58-0016   | <b>HEAVY DUTY BASEPLATE</b> -All shims, fasteners for flexible coupling pedestal pump to electric motor.  | Pedestal mounted, and motors with frame size 182, 184, 213, or 215                       |
| X      | X   | P-58-0028   | <b>STANDARD DUTY BASEPLATE</b> - All shims, fasteners for flexible coupling pedestal pump to electric motor or gas engine.  | Pedestal mounted, and motors with frame sizes 56, 143, 145, & also 3.5 to 6.5 HP engines |
| X      | X   | P-58-0020   | <b>1½" PIPE FITTINGS KIT, NPT</b> - Two faced steel nipples, one polypropylene elbow (for PVC nipples order P-58-0037.)   | All 1½" pumps  |
| X      | X   | P-58-0021   | <b>2" PIPE FITTINGS KIT, NPT</b> - Same as Kit P-58-0020 (for PVC nipples order P-58-0038.)   | All 2" pumps   |
| X      | X   | P-58-0022   | <b>3" PIPE FITTINGS KIT, NPT</b> - Same as Kit P-58-0020 (for PVC nipples order P-58-0039.)   | All 3" pumps   |
| X      | X   | P-58-0040   | <b>CLOSE COUPLED ELECTRIC MOTOR CONVERSION KIT</b> - All parts needed to convert a pump to close coupled electric motor drive. (Does not include baseplate; see Kit P-58-0086.) | All pumps  |

| OPTION | KIT | PART NUMBER      | DESCRIPTION   | TYPES OF 'S' PUMPS TO USE WITH/ON                                    |
|--------|-----|------------------|---|--|
| -      | X   | P-58-0047        | <b>HYDRAULIC MOTOR CONVERSION KIT</b> - Parts to convert pump to CC hydraulic drive, less motor.  | All pumps  |
| -      | X   | P-58-0047<br>HYC | <b>HYDRAULIC MOTOR KIT</b> - Pedestal mounted hydraulic motor, SS shaft adapter, shims and fasteners to mount pump to hydraulic motor.  | All pumps  |
| -      | X   | P-58-0048        | <b>HYDRAULIC MOTOR BASEPLATE KIT</b> - With fasteners to mount hydraulic motor driven pump.   | Hydraulic motor driven   |
| --     | X   | P-58-0056        | <b>REGULAR DUTY BASEPLATE</b> - Powder coated steel. For Super 'S' pumps. All fasteners, shims to mount.  | All pumps with 5 HP electric motors                                  |
| -      | X   | P-58-0074        | <b>EPDM PUMP REPAIR KIT</b> - EPDM shaft seal and all 'O'-rings skin packed on display card.  | All pumps  |
| -      | X   | P-58-0086        | <b>CLOSE COUPLED BASEPLATE KIT</b> - Molded base and parts for close coupled electric drive.  | 1½" and 2" pumps   |
| X      | X   | P-58-0097        | <b>CAST IRON PEDESTAL CONVERSION KIT</b> - Parts to convert to cast pedestal mount with solid stainless steel shaft.  | All pumps  |
| X      | X   | P-58-0097H       | <b>CAST IRON PEDESTAL CONVERSION KIT</b> - Same as P-58-0097 except Hastelloy shaft and mounting screws.  | All pumps  |
| -      | X   | P-58-0114        | <b>RUBBER FEET KIT</b> - Includes 4 rubber feet/ fasteners.   | Use with base rails Kit 0002 on 3.5 HP to 6.5 HP engine driven pumps |
| --     | X   | P-58-0118        | <b>CHASSIS AND CARRY HANDLE ASSEMBLY.</b>   | Diesel driven 'S' pumps  |
| X      | -   | P-58-0135A       | <b>SILICONIZED GRAPHITE SHAFT SEAL, BUNA-N</b> - Uses standard stainless steel case and spring, siliconized graphite faces and Buna-N bellows. Replaces standard carbon/ceramic shaft seal. | All pumps  |
| X      | -   | P-58-0136A       | Same as P-58-0135, except EPDM.   | All pumps  |
| X      | -   | P-58-0137A       | Same as P-58-0135, except Viton.  | All pumps  |
| X      | -   | P-58-0158A       | <b>ETFE/SILICONIZED GRAPHITE SHAFT SEAL, EPDM</b> - Special mechanical shaft seal, uses Halar case, siliconized graphite faces, EPDM bellows. Replaces standard carbon/ceramic shaft seal.  | All pumps  |
| X      | -   | P-58-0159A       | <b>ETFE/SILICONIZED GRAPHITE SHAFT SEAL, VITON</b> - Same as P-58-0158A except Viton bellows.   | All pumps  |
| X      | -   | P-58-0187A       | <b>KYNAR/POLYPRO/SILICON CARBIDE SHAFT SEAL</b> - Special mechanical shaft seal uses Kynar case, polypropylene retainer, Viton bellows, Elgiloy® spring. Replaces standard shaft seals.     | All pumps  |
| X      | -   | P-58-0189A       | <b>KYNAR/POLYPRO/SILICON CARBIDE SHAFT SEAL</b> - Same as P-58-0187A except EPDM bellows.   | All pumps  |
| X      | X   | P-58-0161        | <b>1½" NPT CAMELOT QUICK CONNECT FITTINGS KIT</b> - Two quick connect adapters, Type F, one polypropylene elbow.  | All 1½" pumps  |
| X      | X   | P-58-0162        | <b>2" NPT CAMELOT QUICK CONNECT FITTINGS KIT</b> - Same as P-58-0161 except 2" adapters and elbow.  | All 2" pumps   |
| X      | X   | P-58-0163        | <b>3" NPT CAMELOT QUICK CONNECT FITTINGS KIT</b> - Same as P-58-0161 except 3" adapters and elbow.  | All 3" pumps   |
| X      | X   | P-58-0179A       | <b>TWO VITON LIP SEALS</b> - For cast pedestal, consult factory.  | Cast pedestal mounted<br>All pumps                                   |
| --     | X   | P-58-702EP-P     | <b>REBUILD KIT</b> - contains impeller, volute, all seals and elastomers for EPDM fitted 'S' pumps using the 704-30 impeller.   | All EPDM fitted pumps with 704-30 impeller                           |
| --     | X   | P-58-702EP-U     | <b>REBUILD KIT</b> - contains impeller, volute, all seals and elastomers for EPDM fitted 'S' pumps using the 706-30 impeller.   | All EPDM fitted pumps with 706-30 impeller                           |
| --     | X   | P-58-954EP-Y     | <b>REBUILD KIT</b> - contains impeller, volute, all seals and elastomers for EPDM fitted 'S' pumps using the 974-30 impeller.   | All EPDM fitted pumps with 974-30 impeller                           |
| -      | X   | P-58-0210        | <b>HARDWARE KIT</b> - All screws, shim and ket to repair pump.  | All 'S' pumps.   |

| OPTION | KIT | PART NUMBER  | DESCRIPTION   | TYPES OF 'S' PUMPS TO BE USED WITH/ON  |
|--------|-----|--------------|---|--|
| X      | -   | P-58-0181BA  | <b>POLYPROPYLENE ENCAPSULATED IMPELLER SCREW</b> - Replaces standard stainless steel impeller screw, P-58-0716 10, Buna-N 'O'-ring. | All pumps  |
| X      | X   | P-58-0181LA  | <b>POLYPROPYLENE ENCAPSULATED IMPELLER SCREW</b> - As above w/EPDM 'O'-ring.  | All pumps  |
| X      | X   | P-58-0181VA  | <b>POLYPROPYLENE ENCAPSULATED IMPELLER SCREW</b> - As above w/Viton 'O'-ring.   | All pumps  |
| X      | X   | P-58-0185    | <b>MOTOR CONVERSION KIT</b> - Same as P-58-0186, except for Series 100 motors   | All pumps  |
| X      | X   | P-58-0186    | <b>MOTOR CONVERSION KIT</b> - All parts needed to close-couple pump to series 90 European motors.                                   | All pumps  |
| X      | -   | P-58-0188BA  | <b>RYTON® ENCAPSULATED IMPELLER SCREW</b> - Replaces standard stainless steel impeller screw, P-58-0716 10, Buna-N 'O'-ring.        | All pumps  |
| X      | -   | P-58-0188LA  | <b>RYTON ENCAPSULATED IMPELLER SCREW</b> - Same as P-58-0188BA, except EPDM 'O'-ring.   | All pumps  |
| X      | -   | P-58-0188VA  | <b>RYTON ENCAPSULATED IMPELLER SCREW</b> - Same as P-58-0188B A, except Viton 'O'-ring.   | All polyester 'S' pumps w/EPDM   |
| -      | -   | P-58-0211    |   |  |
| X      | X   | -----        | <b>FILL AND DRAIN PLUG KIT</b> - with EPDM "O"-rings  | All polyester pumps  |
| -      | -   | P-58-0734    | <b>ABRASION RESISTANT LINED VOLUTE</b> - See parts list or consult factory.   |  |
| -      | -   | P-58-0734 91 | <b>STRAINER, 1½" NPT</b> - For end of suction hose, molded polyethylene.  | All 1½" pumps  |
| -      | -   | P-58-0733    | <b>STRAINER, 1½" NPT</b> - Same as above except molded in Halar.  | All 1½" pumps  |
| -      | -   | P-58-0733 91 | <b>STRAINER, 2" NPT</b> - For end of suction hose, molded in polyethylene.  | All 2" pumps   |
| -      | -   | P-58-0757    | <b>STRAINER, 2" NPT</b> - Same as P-58-0733 except molded in Halar.   | All 2" pumps   |
| -      | -   | P-58-0757 91 | <b>STRAINER, 3" NPT</b> - For end of suction hose, molded polyethylene.   | All 3" pumps   |
| -      | -   | P-58-0753 40 | <b>STRAINER, 3" NPT</b> - Same as P-58-0757 except molded in Halar.   | All 3" pumps   |
| -      | -   | P-58-0752 40 | <b>ELBOW, 90°, 1½" MALE x FEMALE NPT STREET ELL</b> , Molded polypropylene.   | All 1½" pumps  |
| -      | -   | P-58-0756 40 | <b>ELBOW, 90°, 2" MALE x FEMALE NPT STREET ELL</b> , Molded polypropylene.  | All 2" pumps   |
| -      | -   | P-58-0785    | <b>ELBOW, 90°, 3" MALE x FEMALE NPT STREET ELL</b> , Molded polypropylene.  | All 3" pumps   |
| -      | -   | P-58-0786    | <b>COUPLING, FLEXIBLE</b> - Connects 3/4" diameter shaft to 5/8" diameter shaft.  | Pedestal mounted pumps with 56 frame electric motor  |
| -      | -   | P-58-0787    | <b>COUPLING, FLEXIBLE</b> - Connects 3/4" diameter shaft to 7/8" diameter shaft.  | Pedestal mounted pumps with 143T, 145T, or 184 frame size electric motors or engines having 7/8" diameter shaft. |
| -      | -   | P-58-0788    | <b>COUPLING, FLEXIBLE</b> - Connects 3/4" diameter shaft to 1-1/8" diameter shaft.  | Pedestal mounted pumps with 182T or 184T frame size electric motors or engines having 1-1/8" diameter shaft.     |
| -      | -   | P-58-0875    | <b>COUPLING, FLEXIBLE</b> - Connects 3/4" diameter shaft to 1-3/8" diameter shaft.  | Pedestal mounted pumps with 213 or 215 frame size electric motors or engines having 1-3/8" diameter shaft.       |
| -      | -   | P-58-0876    | <b>COUPLING, FLEXIBLE</b> - Connects 3/4" diameter shaft to 1" diameter shaft.  | Pedestal mounted pumps with engines or motors having 1" diameter shaft.  |

Registered Trademarks:

Hastelloy - Haynes International    Ryton - Phillips Chemical  
 Viton - DuPont Dow Elastomers    Halar - Ausimont  
 Kynar - Atochem

All specifications subject to change without notice

# PACER PUMPS

Division of ASM Industries, Inc.